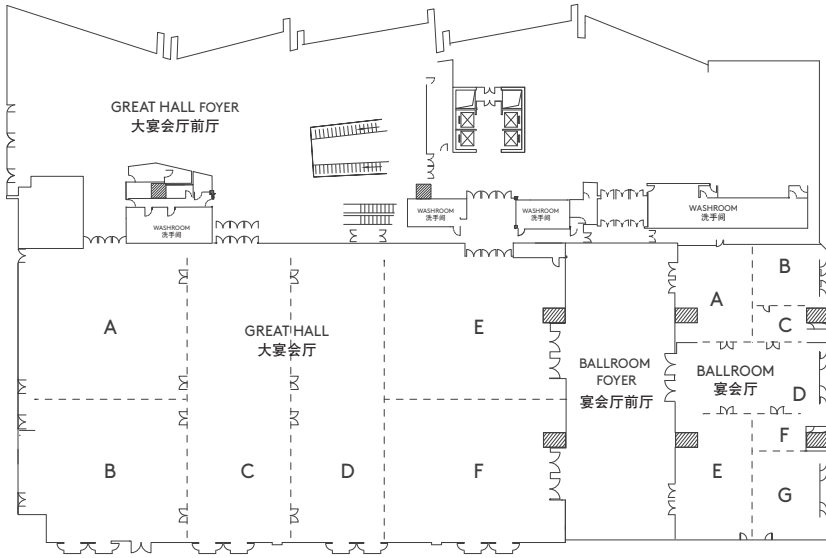


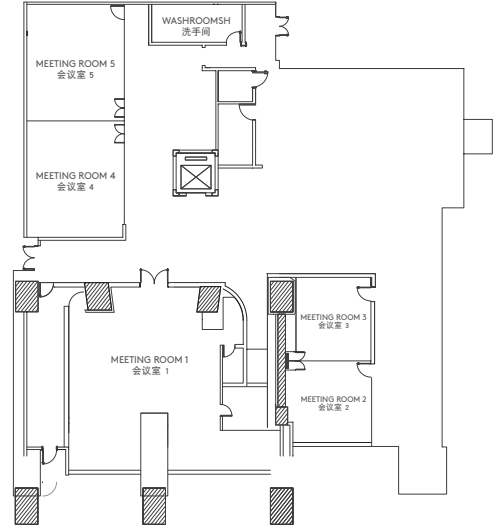
LANGHAM PLACE

GUANGZHOU

LEVEL 3 三层



LEVEL 5 五层



CAPACITY CHART
会议及宴会场地可容纳人数

Function Room 宴会场地	Dimensions (m ²) 面积 (平方米)	Length x Width (m) 长x宽 (米)	Ceiling Height (m) 层高 (米)	Pax 可容纳人数					
				Theatre 剧院式	Reception 酒会	Banquet 宴会式	Classroom 课桌式	U-Shape U形	Boardroom Capacity 董事会议
Great Hall 大宴会厅	2800	70 x 40	11	2,200	2,400	1,700	1,400	-	-
Great Hall Foyer 大宴会厅前厅	561	51 x 11	11	-	500	-	-	-	-
Great Hall A 大宴会厅 A	400	20 x 20	11	360	350	300	220	75	-
Great Hall B 大宴会厅 B	400	20 x 20	11	300	350	240	200	66	-
Great Hall C 大宴会厅 C	560	14 x 40	11	420	500	320	270	117	-
Great Hall D 大宴会厅 D	480	12 x 40	11	420	400	300	270	114	-
Great Hall E 大宴会厅 E	480	24 x 20	11	360	400	240	180	66	-
Great Hall F 大宴会厅 F	480	24 x 20	11	360	400	300	220	75	-
Ballroom 宴会厅	760	40 x 19	8	720	350	430	430	102	-
Ballroom Foyer 宴会厅前厅	492	41 x 12	8	-	400	-	-	-	-
Ballroom A+B+C 宴会厅 A+B+C	435	23 x 19	8	240	100	144	140	66	-
Ballroom A 宴会厅 A	130	13 x 10	8	90	50	72	60	41	-
Ballroom B+C 宴会厅 B+C	115	13 x 9	8	90	50	72	60	38	-
Ballroom A+B+C+D 宴会厅 A+B+C+D	435	23 x 19	8	440	150	240	200	75	-
Ballroom D 宴会厅 D	190	19 x 10	8	160	80	96	120	66	-
Ballroom E+F+G 宴会厅 E+F+G	325	17 x 19	8	280	120	190	180	69	-
Ballroom E 宴会厅 E	170	17 x 10	8	110	60	96	80	51	-
Ballroom F+G 宴会厅 F+G	155	17 x 9	8	110	60	96	80	51	-
Ballroom D+E+F+G 宴会厅 D+E+F+G	515	27 x 19	8	540	180	288	260	51	-
Meeting Room 1 会议室 1	85	8.5 x 10	3	65	-	-	57	24	24
Meeting Room 2 会议室 2	27	6 x 4.5	3	-	-	-	-	-	12
Meeting Room 3 会议室 3	28	7 x 4	3	-	-	-	-	-	12
Meeting Room 4 会议室 4	45	9 x 5	3	-	-	-	-	-	18
Meeting Room 5 会议室 5	44	7 x 6.3	3	-	-	-	-	-	18