

Notes

1. REFER TO OTHER CONSULTANT'S DRAWINGS FOR REQUIRED E/M PROVISIONS
1. 有关之机电规定，请参考其他顾问图纸。
2. ALL GANG / POWER POINTS OUTLETS TO BE CONCEALED AS REQUIRED. COVER PLATE FINISH TO BE SATIN CHROME. CONTRACTOR TO SUBMIT SAMPLE FOR ID APPROVAL
2. 按照规定，所有底箱必须隐藏安装。面板须为缎纹不锈钢饰面。承建商须提交样板给设计师审批。
3. ALL SOCKET OUTLET AND JUNCTION BOXES LOCATION SUBJECT TO SITE COORDINATION & VERIFICATION PRIOR TO INSTALLATION. CONTRACTOR TO SUBMIT SHOP DRAWING FOR ID APPROVAL
3. 所有电源插座及接线盒位置在安装之前需于工地协调及核实。承建商须提交最终位置施工图给设计师确认。
4. REFER TO DETAIL DRAWINGS & FF&E SPECIFICATION FOR FURTHER DETAILS AND SETTING-OUT INFORMATION.
4. 相关的机电定位要求，请参考详图及家具灯具说明书。
5. SEE AV CONSULTANT DRAWING PACKAGE FOR LOCATIONS OF AV OUTLETS AND POWER SOCKETS FOR AV EQUIPMENT.
5. 影音插座位置，请参考影音顾问图纸。
6. ALL SOCKET OUTLETS HEIGHT TO BE 350mm CENTRE TO F.F.L., UNLESS OTHERWISE NOTED
6. 除非特别标示，所有安装高度以插座中心线与地台完成面计相距350毫米

Rev.	Description	Issue Date	Initial
C	GENERAL REVISION	20.04.11	TCC
B	ADDED FF&E CODES SWITCH & POWER RELOCATION	31.03.11	TCC
A	GENERAL REVISION	28.02.11	TC
-	FIRST ISSUE	15.02.11	TCC

Original by	Date	Draw	Check	App
GF	15.02.10	TCC	MTL	GF

Aedas

Aedas Interiors Ltd.
31/F One Island East
18 Westlands Road
Quarry Bay
Hong Kong

T +852 2861 1728
F +852 2143 6216
E hongkong@aedas.com
aedas.com

Client

EAST PACIFIC International
东海国际中心 CENTER

Project

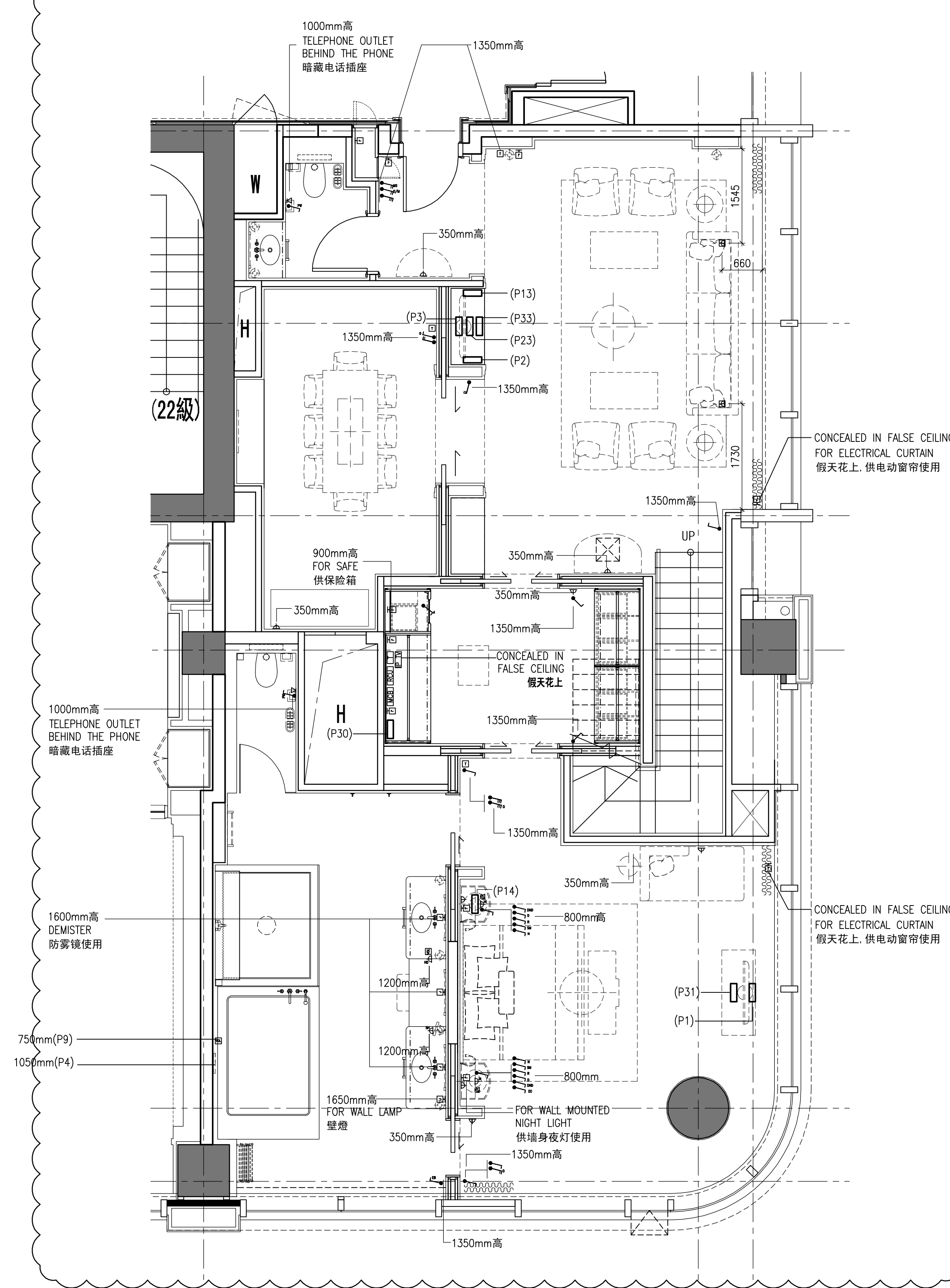
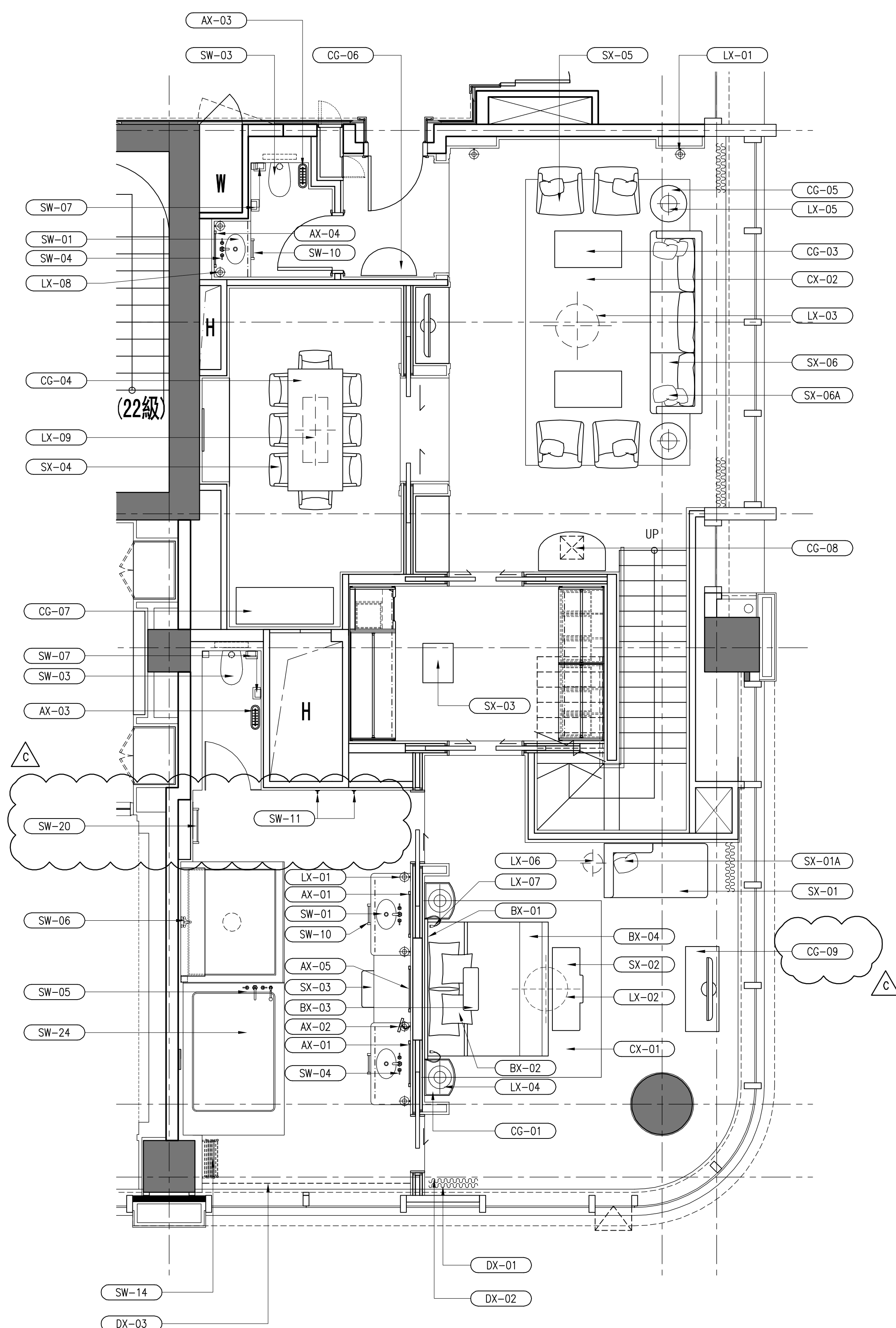
Langham Hotel Futian, Shenzhen
深圳福田朗廷酒店

Drawing

HONEYMOON SUITE 1
FF&E PLAN AND E&M PLAN
二十三層蜜月套房(一)
家具布置平面图及机电资料平面图

Computer file P:\ID210006 Langham Futian 23F\230200 Drawing\Sheet\Room\Queenroom101R01 AED006-H-14-TC-1091.dwg	Pilot Date 20.04.11
Project Number ID210006	Scale 1 : 50 @ A1
Drawing Number AED006-H-14-TC-1091	Rev. C
	Issue status -

This drawing is to be read in conjunction with all related drawings. Do not scale from this drawing. All dimensions must be checked and verified on site before commencing any work or producing shop drawings. The originator should be notified immediately of any discrepancy. This drawing is copyright and remains the property of Aedas.



* AV EQUIPMENT AND OUTLET TO BE CONFIRMED 影音设备容後落实