

Drawing Type

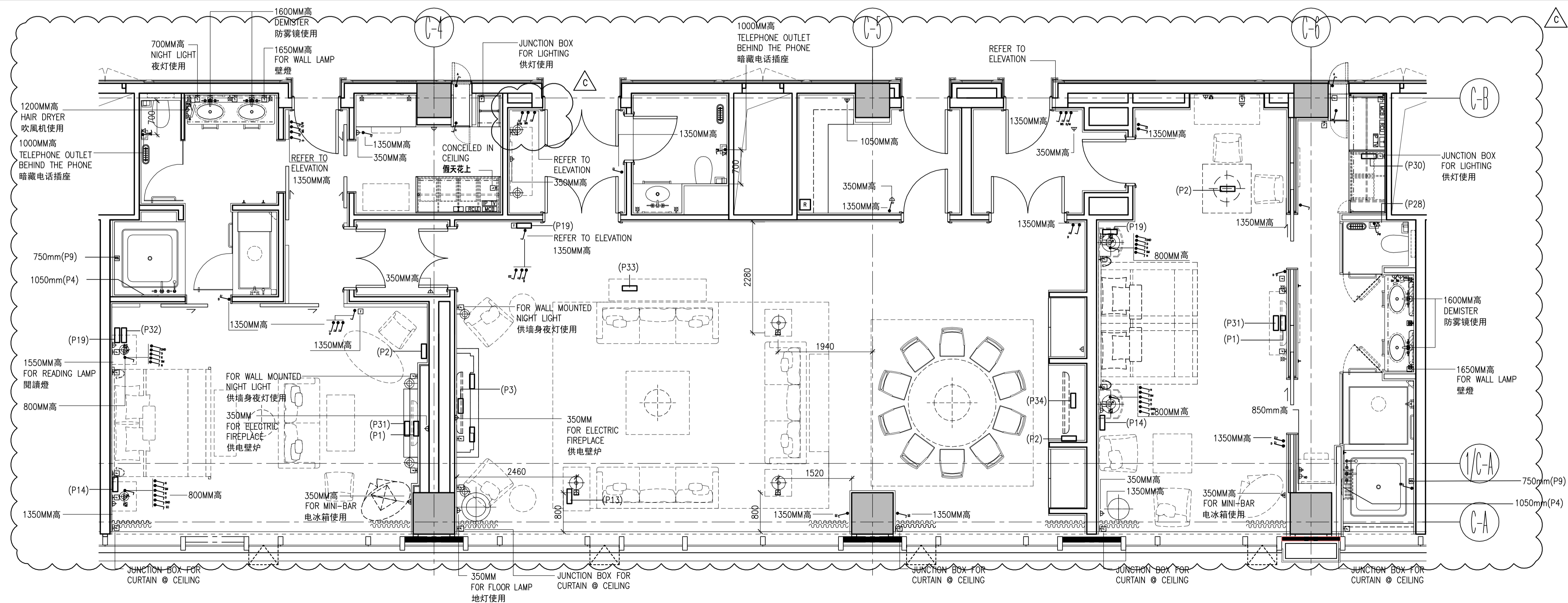
Notes

- REFER TO OTHER CONSULTANT'S DRAWINGS FOR REQUIRED E/M PROVISIONS.
1. 有关之机电规定，请参考其他顾问图纸。
- ALL GANG / POWER POINTS OUTLETS TO BE CONCEALED AS REQUIRED. COVER PLATE FINISH TO BE SATIN CHROME. CONTRACTOR TO SUBMIT SAMPLE FOR ID APPROVAL.
2. 按照规定，所有底箱必须隐藏安装。面板须为缎纹不锈钢饰面。承建商须提交样板给设计师审批。
- ALL SOCKET OUTLET AND JUNCTION BOXES LOCATION SUBJECT TO INSTALLATION. CONTRACTOR TO VERIFY LOCATION PRIOR TO INSTALLATION. CONTRACTOR TO SUBMIT SHOP DRAWING FOR ID APPROVAL.
3. 所有电源插座及接线盒位置在安装之前需于工地协调及核实。承建商须提交最终位置施工图给设计师确认。
- REFER TO DETAIL DRAWINGS & FF&E SPECIFICATION FOR FURTHER DETAILS AND SETTING-OUT INFORMATION.
4. 相关的机电定位要求，请参考详图及家具灯具说明书。
- SEE AV CONSULTANT DRAWING PACKAGE FOR LOCATIONS OF AV OUTLETS AND POWER SOCKETS FOR AV EQUIPMENT.
5. 影音插座位置，请参考影音顾问图纸。
- ALL SOCKET OUTLETS HEIGHT TO BE 350MM CENTRE TO F.F.L., UNLESS OTHERWISE NOTED.
6. 除非特别标示，所有安装高度以插座中心线与地台完成面计相距350毫米。

1

FF&E PLAN
建筑资料平面图

SCALE: 1:50 @ A1, 1:100 @ A3



2

ELECTRICAL & MECHANICAL PLAN
地台饰面平面图

SCALE: 1:50 @ A1, 1:100 @ A3

Code	Description	Date	By	Check	App
C	GENERAL COMMENTS	20.04.11	TCC		
B	FF&E CODES	31.03.11	TCC		
	E&M POWER POINT				
A	GENERAL REVISION	28.02.11	TCC		
-	FIRST ISSUE	15.02.11	TCC		

Rev.	Description	Issue Date	Initial
Original by			
GF		15.02.11	TCC MTL GF

Aedas

Aedas Interiors Ltd.
31/F One Island East
18 Westlands Road
Quarry Bay
Hong Kong

T +852 2861 1728
F +852 2143 6216
E hongkong@aedas.com
aedas.com

EAST PACIFIC International
东海国际中心

Project
Langham Hotel Futian, Shenzhen
深圳福田朗廷酒店

Drawing
LEVEL 20 GRAND SUITE
FF&E PLAN AND EM PLAN
二十层大型行政套房
家具布置平面图及机电资料平面图

Computer file	Pilot Date	
M:\work\021006 Langham Futian 23C04002 Drawing\Sheet\Level 20 Grand Suite\021006 AED006-H-14-TC-1131.dwg	28.02.11	
Project Number	Scale	
ID210006	1:50 @ A1	
Drawing Number	Rev.	Issue status
AED006-H-14-TC-1131	C	-

This drawing is to be read in conjunction with all related drawings. Do not scale from this drawing. All dimensions must be checked and verified on site before commencing any work or producing shop drawings. The originator should be notified immediately of any discrepancy. This drawing is copyright and remains the property of Aedas.